

Jacob Holtz Company

10 Industrial Hwy, MS-6
 Airport Business, Complex "B"
 Lester, PA 19029 US

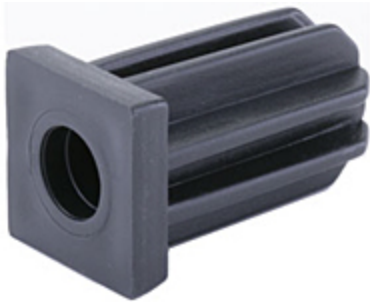
Phone: 215-423-2800 • **Fax:** 215-634-7454

Email: info@jacobholtz.com • **Website:** www.jacobholtz.com

Caster Inserts, Sockets & Brackets

caster sockets, caster inserts, caster socket, caster insert, plastic caster sockets, plastic caster inserts, chair caster sockets

Sockets and Brackets are a perfect accessory designed to hold caster stem fittings. Ideal for inserting stem casters into tubular legs or welded to angle iron and channel.



Results 1 - 21 of 21

Item #	Press Fits	Stem Type	Stem Size	Construction
HMCC-34-BLK	3/4" Caster Clip With Socket	N/A	N/A	Metal
1116-7/16-BLK	1" X 16 Gauge, Square	Friction Ring Stem	7/16 x 2 1/8 in	Molded Plastic
1120 CAST	1" X 16-18 Gauge, Square Spring Clip	Friction Ring Stem	7/16 x 2 1/8 in	Metal
1120-7/16-BLK	1" X 18 - 20 Gauge, Square	Friction Ring Stem	7/16 x 2 1/8 in	Molded Plastic
1156-2-BLK	1" X 20 - 22 Gauge, Round	Socket Stem (2 Stem)	5/16 x 1 1/2 in	Molded Plastic
1158-7/16-BLK	1" X 18 Gauge, Round	Friction Ring Stem	7/16 x 2 1/8 in	Molded Plastic
1159-7/16-BLK	1" X 16 Gauge, Round	Friction Ring Stem	7/16 x 2 1/8 in	Molded Plastic
1190 CAST	1-1/4" X 16-18 Gauge, Round Spring Clip	Friction Ring Stem	7/16 x 2 1/8 in	Metal
1190-7/16-BLK	1-1/4" X 18 Gauge, Round	Friction Ring Stem	7/16 x 2 1/8 in	Molded Plastic
1255-4-NAT	1/2" Hole	Socket Stem (4 Stem)	3/8 x 1 0/16 in in	Molded Plastic

		(4 Stem)	9/16 in in	Plastic
MS-716	9/16" Hole	Friction Ring Stem	7/16 x 2 1/8 in	Metal
MS-716- RAW	9/16" Hole	Friction Ring Stem	7/16 x 2 1/8 in	Metal
MS-716- ZP-W/FLG	19/32" Hole	Friction Ring Stem	7/16 x 2 1/8 in	Metal
CMCB-716- ZP	Corner Mount Caster Bracket - 0.300 X 0.500 Slot	Friction Ring Stem	7/16 x 2 1/8 in	Metal
SMCB-716- RAW	Side Mount Bracket	Friction Ring Stem	7/16 x 2 1/8 in	Metal
SMCB-716- ZP	Side Mount Bracket	Friction Ring Stem	7/16 x 2 1/8 in	Metal
1165-2-BLK	3/4" X 20 - 22 Gauge, Round Plastic	Socket Stem (2 Stem)	5/16 x 1 1/2 in	Molded Plastic
1196-7/16- BLK	1-3/8" X 19 Gauge, Round Plastic Caster Insert, 7/16" Stem, Hdpe, Black	Friction Ring Stem	7/16 x 2 1/8 in	Molded Plastic
750-2-BLK	3/4" X 18 Gauge, Square	Socket Stem (2 Stem)	5/16 x 1 1/2 in	Molded Plastic
SGNS-3/4- ZP-HD	3/4" Base Diameter	N/A	N/A	Metal
1161-2-TAN	7/16" ROUND HOLE, PLASTIC CASTER INSERT FOR WOOD APPLICATION, 5/16" SOCKET STEM (2 STEM), HDPE, TAN	Socket Stem (2 Stem)	5/16 x 1 1/2 in	Molded Plastic

Results 1 - 21 of 21